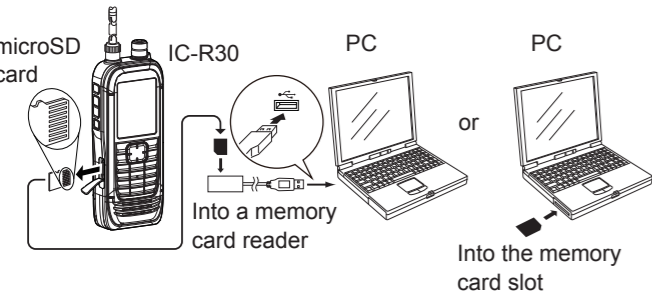


Using a microSD card

◇ Saving the setting data onto a PC

NOTE: If you use a brand new microSD card, first format the card with the IC-R30. See section 1 of the IC-R30 BASIC MANUAL for details.

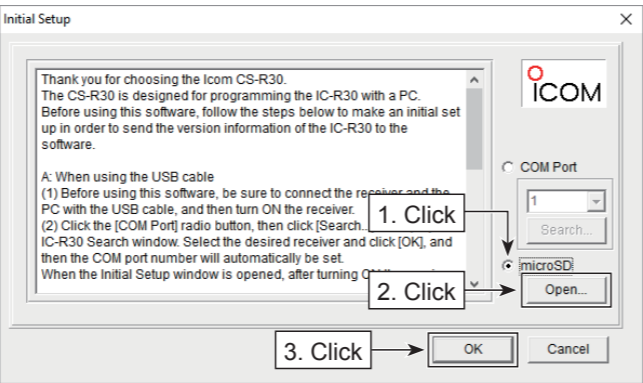
1. Save the receiver's setting data onto a microSD card.
① See section 1 of the IC-R30 BASIC MANUAL for details.
2. Turn OFF the receiver, and remove the microSD card from the receiver.
3. Insert the microSD card into a memory card reader or the memory card slot of the PC, as shown below.
4. Copy the receiver's setting data (ICF file), stored in the [Setting] folder of the microSD card, to a PC local folder.
① See "Saving the setting data onto a microSD card" below how to access the [Setting] folder.



◇ Initial setup window

After starting up the CS-R30, "Initial Setup" is displayed. Before using the CS-R30, read the instructions thoroughly, and follow the steps below to make the initial setup in order to send the version information of your receiver to the CS-R30.

TIP: If you want to make the initial setup again, click the [CS-R30 Initial Setup] in the 'CS-R30' group.



1. Click the <microSD> radio button.
2. Click <Open...> to display the data file selection window. Select the ICF file, saved in "Saving the setting data onto a PC," described above.
3. Click <OK> to read the selected file, and open the cloning screen.
4. Program each setting for each function, using the CS-R30.
① See the Help file of the CS-R30 for assistance.

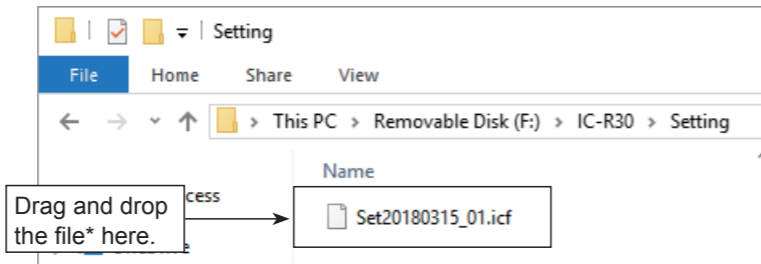
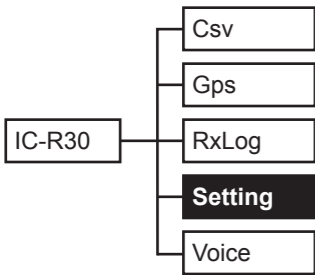
NOTE: When the receiver version information is not correctly sent to the software, some items may not be displayed in the software.

◇ Saving the setting data onto a microSD card

To load the setting data into the receiver, copy the setting data edited with the CS-R30 to the [Setting] folder on the microSD card.

- ① See the IC-R30 ADVANCED MANUAL on how to load the setting data into the receiver.

The microSD card's folder composition



* You can enter a file name of up to 20 characters.

ICOM INSTRUCTIONS CLONING SOFTWARE CS-R30

Thank you for choosing this Icom product.
READ ALL INSTRUCTIONS carefully and completely before using this product.

System requirements

To use the software, the following hardware and software are required.

- **Operating System (OS)**
Microsoft® Windows® 10
Microsoft® Windows® 8.1
(Except for Microsoft® Windows® RT)
Microsoft® Windows® 7
① These instructions are based on using Microsoft® Windows® 10.
- **USB port** (USB 1.1, 2.0, or 3.0 port)

Select one of the following.

When using a USB cable

- USB cable
(A-microB type, supplied with the receiver)
① Directly connect the receiver to a PC's USB port.

When using a microSD card

- microSD card (user supplied)
- Memory card slot built into the PC
or
Memory card reader (User supplied)
to read the microSD card
① If you connect the IC-R30 to a PC using a USB cable, in the SD Card mode you can use the receiver instead of a memory card slot or a memory card reader.
See the IC-R30 ADVANCED MANUAL for details.

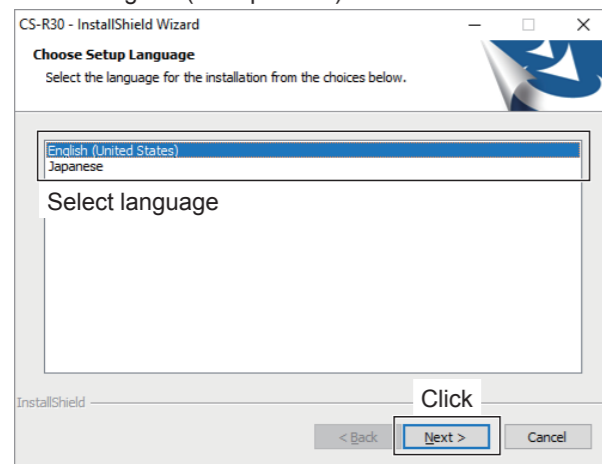
Programming information

- To prevent data loss, you should first read the receiver setting data into the CS-R30, or copy the setting data (ICF file) of the microSD card to the PC, and read the data into the CS-R30. Then edit or enter new software parameters.
- Before editing or entering new data, make a backup file onto your PC. A backup file enables easy restoring even if the setting data is accidentally deleted.
- While reading or writing (uploading) the data with the USB cable, **NEVER** turn OFF the receiver or the PC, and **NEVER** disconnect the USB cable. Otherwise, the data could be lost or deleted.
- While reading or writing the data to or from the microSD card, **NEVER** remove the microSD card or turn OFF the receiver. Otherwise, the data could be corrupted or the microSD card could be damaged.

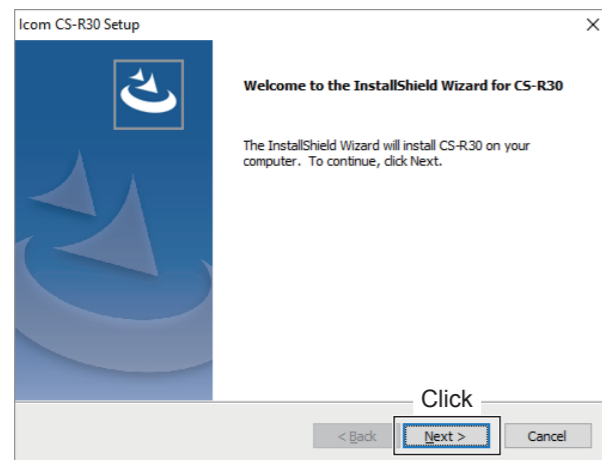
Software installation

When installing the software, confirm Windows has completed its startup, and then log in as the administrator.

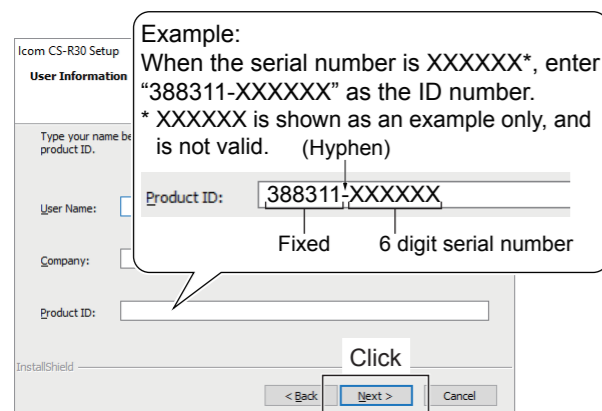
1. Confirm no other applications are running.
2. Insert the CD into a CD drive.
3. Double-click the “setup.exe” in the [CSR30] folder.
① If “User Account Control” is displayed, click <Yes> to continue.
4. “Choose Setup Language” is displayed. Select ‘English’ (or ‘Japanese’) and then click <Next>>.



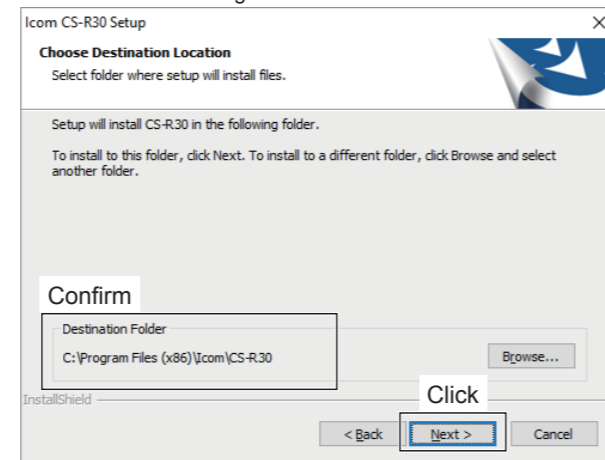
5. “Welcome to the InstallShield Wizard for CS-R30” is displayed. Click <Next>>.



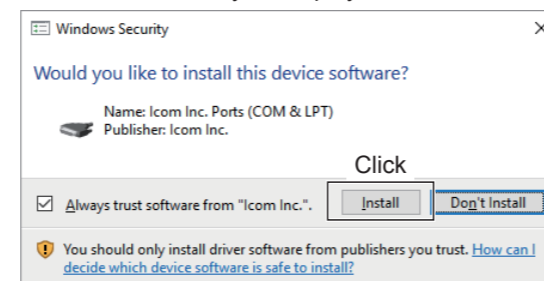
6. “User Information” is displayed. Enter your name, your company name (option), and the product ID number as described below. Click <Next>>.



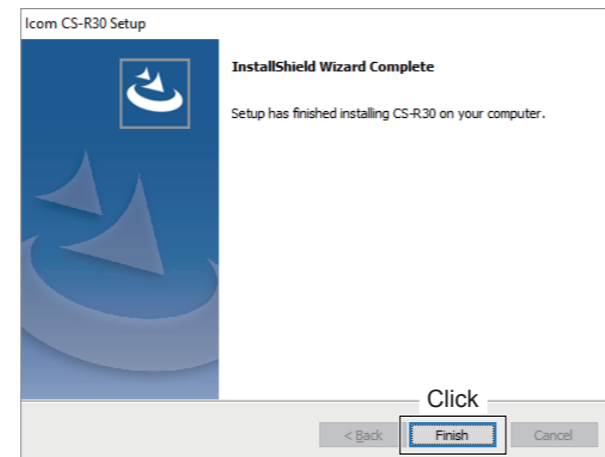
7. “Choose Destination Location” is displayed. Click <Next>>.
① If desired, click <Browse...> to select another destination folder before clicking <Next>>.



8. If “Windows Security” is displayed, click <Install>.



9. After the installation has completed, “InstallShield Wizard Complete” is displayed. Click <Finish>.



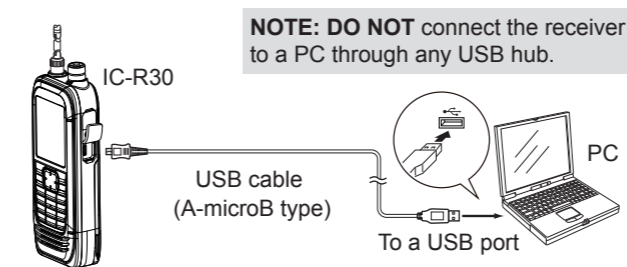
10. Eject the CD.
11. A ‘CS-R30’ folder is created in the Windows Start menu, and a shortcut icon is created on the desktop.

NOTE:
You can uninstall the software using the “Apps & features” in the “System” menu.
To get started, click on Start > Settings > System > Apps & features.

Using a USB cable

◇ Receiver and PC connection

Connect the USB cable as shown below.

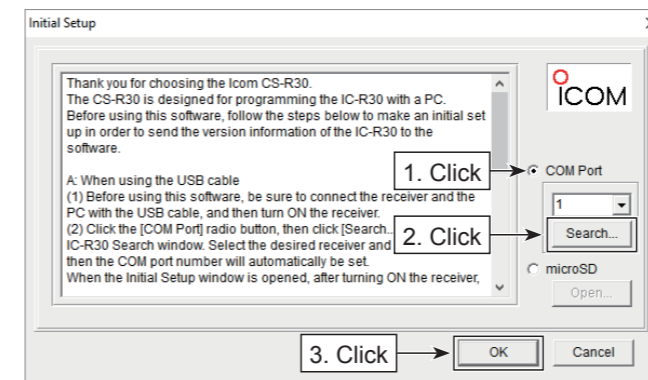


◇ Initial setup window

After starting up the CS-R30, “Initial Setup” is displayed. Before using the CS-R30, read the instructions thoroughly, and follow the steps below to make the initial setup in order to send the version information of your receiver to the CS-R30.

TIP: If you want to make the initial setup again, click the [CS-R30 Initial Setup] in the ‘CS-R30’ group.

Confirm that the receiver is connected to the PC with a USB cable and the power is turned ON.



1. Click <COM Port> radio button.
2. Click <Search...> to display the IC-R30 Search window. Select the appropriate receiver and click <OK>, then the COM port number will be set in the input field.
3. Click <OK> to open the cloning screen.

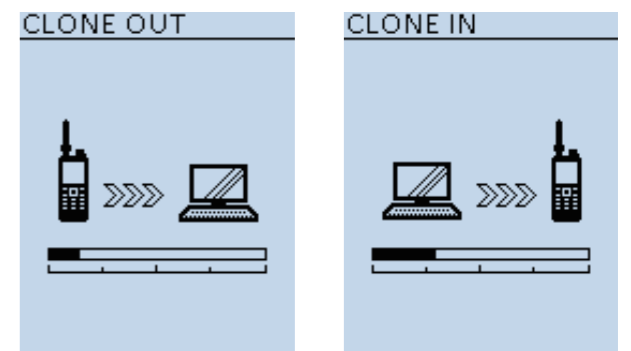
NOTE: When the receiver version information is not correctly sent to the software, some items may not be displayed on the software.

◇ Cloning operation

Follow the steps described below to clone.

1. Push [MENU] on the receiver and enter the Clone Mode. ([MENU] > Others > Clone > **Clone Mode**)
2. Click or select “Read <- Receiver” in the [Clone] menu to start reading the data from the receiver. You can also click or select “Open... Ctrl+O” in the [File] menu to open an ICF file and write the file data to the receiver.
3. Set each setting for each function, using the CS-R30.
① See the Help file of the CS-R30 for assistance.
4. Push [MENU] on the receiver and enter the Clone Mode.
5. Click or select “Write -> Receiver” in the [Clone] menu to write the new or edited data into your receiver.

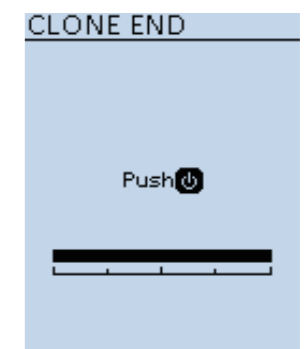
NOTE: After writing, the new or edited data will overwrite the current data.



While reading

While writing

6. Turn OFF the receiver, then turn it ON again to operate the receiver with the loaded data.



When the writing is completed